

# Hammers & Pry Bars



## Sheet Metal Hammers

**One-Piece Steel** One-piece forged, I-beam construction. Full-polished heads with beveled face and pein are corrosion resistant. Hammer sections are individually hardened and tempered for strength and resiliency.



**RH4V**

**VINYL GRIPPED**  
12 oz. (340g) Riveting Hammer

Molded-on vinyl grips minimize recoil and offer excellent comfort, non-slip gripping and durability.

CATALOG NUMBER	HEAD WEIGHT oz. (g)	HEAD LENGTH in. (mm)	FACE SIZE in. (mm)	NOMINAL O/A LENGTH in. (mm)
<b>RH4V</b>	12 (340)	4-7/8 (124)	3/4 (19.1)	11 (279)



**SH3**

**LEATHER GRIPPED**  
18 oz. (510g) Setting Hammer

Grip is protected with a durable lacquer coating. Leather conforms to hand over time.

CATALOG NUMBER	HEAD WEIGHT oz. (g)	HEAD LENGTH in. (mm)	FACE SIZE in. (mm)	NOMINAL O/A LENGTH in. (mm)
<b>SH3</b>	18 (510)	5-1/2 (140)	7/8 (22.2)	11-3/4 (298)



**SH3V**

**VINYL GRIPPED**  
18 oz. (510g) Setting Hammer

Molded-on vinyl grips minimize recoil and offer excellent comfort, non-slip gripping and durability.

CATALOG NUMBER	HEAD WEIGHT oz. (g)	HEAD LENGTH in. (mm)	FACE SIZE in. (mm)	NOMINAL O/A LENGTH in. (mm)
<b>SH3V</b>	18 (510)	5-1/2 (140)	7/8 (22.2)	11-3/4 (298)



**RH4**

**LEATHER GRIPPED**  
12 oz. (340g) Riveting Hammer

Grip is protected with a durable lacquer coating. Leather conforms to hand over time.

Catalog Number	Head Weight oz. (g)	Head Length in. (mm)	Face Size in. (mm)	Nominal O/A Length in. (mm)
<b>RH4</b>	12 (340)	4-7/8 (124)	3/4 (19.1)	11 (279)

## Dead Blow Hammer

- **Non-Marring**
- **Non-Sparking**
- **Non-Recoiling**

*One piece construction of weather-resistant, urethane compound ensures long service life.*

*Steel shot inside head absorbs impact to prevent recoil.*

*Excellent for working copper, other soft metals and hardened sheet steel including ductwork and auto body panels.*

*Flanged handle butt for a more secure grip.*

**NEW**



CATALOG NUMBER	WEIGHT oz. (g)	HEAD LENGTH in. (mm)	FACE SIZE in. (mm)	TOOL LENGTH in. (mm)
<b>DB1</b>	17 (482)	3-1/2 (89)	1-1/4 (32)	11 (279)

*Malco*

## Shinglers Hammer



**SHV** VINYL GRIPPED ONE-PIECE STEEL

Milled face and 1-13/16" (46 mm) cutting edge with stop gauge and retractable blade. One-piece forged I-beam construction, molded-on vinyl grip and leather safety strap.

CATALOG NUMBER	CUTTING EDGE IN. (MM)	NOMINAL O/A LENGTH IN. (MM)
<b>SHV</b>	1-13/16 (46.0)	12-1/2 (318)

### REPLACEMENT PARTS

<b>SHB</b>	Replacement Blade
------------	-------------------

## Claw Hammers



**16SCV** VINYL GRIPPED ONE-PIECE STEEL

One-piece forged, I-beam construction. Full polished head with beveled face. Comfortable, non-slip vinyl grip.

CATALOG NUMBER	CLAW	HEAD WT. OZ. (G)	HEAD LENGTH IN. (MM)	FACE SIZE IN. (MM)	NOMINAL O/A LENGTH
<b>16SCV</b>	straight	16 (454)	4-7/8 (124)	1-1/16 (27.0)	12-1/2 (318)
<b>20SCV</b>	straight	20 (567)	5-5/8 (143)	1-3/16 (30.2)	12-1/2 (318)



**20SC** LEATHER GRIPPED ONE-PIECE STEEL

One-piece forged, I-beam construction. Full polished head with beveled face.

CATALOG NUMBER	CLAW	HEAD WT. OZ. (G)	HEAD LENGTH IN. (MM)	FACE SIZE IN. (MM)	NOMINAL O/A LENGTH
<b>16CC</b>	curved	16 (454)	4-1/4 (108)	1-1/16 (27.0)	12-1/2 (318)
<b>16SC</b>	straight	16 (454)	4-7/8 (124)	1-1/16 (27.0)	12-1/2 (318)
<b>20CC</b>	curved	20 (567)	5 (127)	1-3/16 (30.2)	12-1/2 (318)
<b>20SC</b>	straight	20 (567)	5-5/8 (143)	1-3/16 (30.2)	12-1/2 (318)



**16SCF** FIBERGLASS HANDLED

Black paint and polished finish with chamfered edges and beveled face. Fiberglass minimizes recoil and vinyl grip adds comfort.

CATALOG NUMBER	CLAW	HEAD WT. OZ. (G)	HEAD LENGTH IN. (MM)	FACE SIZE IN. (MM)	NOMINAL O/A LENGTH
<b>16CCF</b>	curved	16 (454)	5-1/4 (133)	1 (25.4)	13 (330)
<b>16SCF</b>	straight	16 (454)	5-1/2 (140)	1 (25.4)	13 (330)
<b>20SCF</b>	straight	20 (567)	6 (152)	1-1/16 (27.0)	13 (330)

## Ball Pein Hammer



**BP8W** WOOD HANDLED

Black painted finish with polished face and pein. Faces are beveled. Fine grained wood handle.

CATALOG NUMBER	HEAD WT. OZ. (G)	LENGTH IN. (MM)	FACE SIZE IN. (MM)	NOMINAL O/L LENGTH IN. (MM)
<b>BP8W</b>	8 (227)	3-3/8 (86)	1 (25.4)	12-1/4 (311)

## Engineers Hammer



**SLH250** WOOD HANDLED

Double faced sledge type head. Black painted finish with polished faces and bevels. Fits easily in tool box! Fine grained wood handle.

Catalog Number	Head Wt. lbs. (kg)	Length in. (mm)	Face Size in. (mm)	Nominal O/L Length in. (mm)
<b>SLH250</b>	2.5 (1.13)	4 (102)	1-3/4 (44.5)	15-1/2 (394)

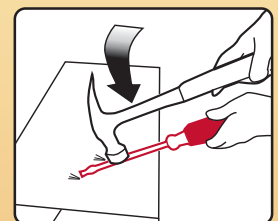
## Handled Duct Ripper

Specially angled ground tip easily punctures and rips duct to the desired length starting hole. Hardened tip is ground on both sides to create 2 cutting edges for long, useful life. Cutting edges are aligned with shaft flats for large striking surfaces. Corrosion resistant blade, cushioned grip and a hang hole for storage complete this handy tool.

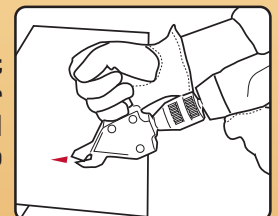


**CDR**

**RIP STARTER HOLE**



**Insert TurboShear or metal cutting snip**



CATALOG NUMBER	NOMINAL LENGTH IN. (MM)	NET WT. OZ. (G)
<b>CDR</b>	9-1/2 (241)	5 (147)

