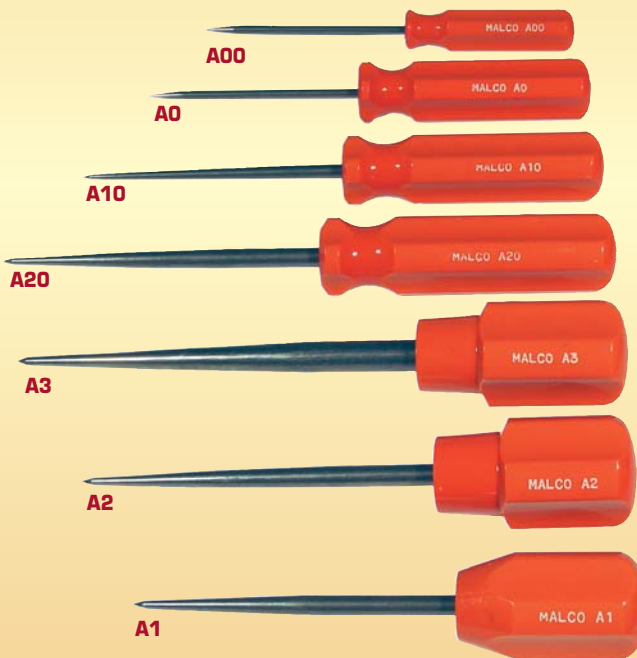
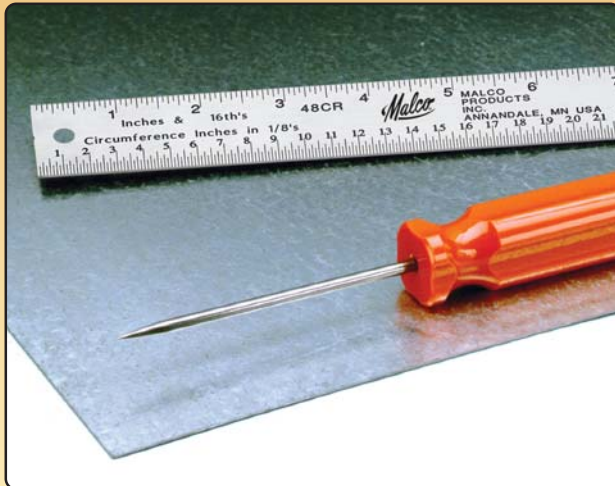




HVAC-Tools of the Trade

Scratch Awls

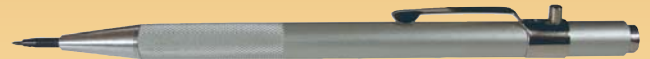


Use to scribe lines on metal, plastic and a variety of other materials. Pierce holes in wood, plastic, leather, - even light gauge metal. Blades are high carbon, alloy tool steel fully polished to resist rust. Blade tapers to a fine point and may be resharpened many times. Easy-to-spot orange handles are shock and shatter resistant. Shallow fluted handles with large end bearing surface provide a sure, comfortable grip. User has choice of large diameter or regular grip handles.

CATALOG NUMBER	NOMINAL BLADE DIAMETER IN. (MM)	BLADE LENGTH IN. (MM)	O/A LENGTH IN. (MM)
A00	1/8 (3.2)	3 (76)	5-1/2 (140)
A0	1/8 (3.2)	3 (76)	6-1/4 (159)
A10	3/16 (4.8)	3-3/4 (95)	7 (178)
A20	A1 7/32 (5.6)	3-1/2 (89)	5-3/4 (146)
	1/4 (6.4)	4 (102)	7-3/4 (197)
	A2 1/4 (6.4)	4 (102)	6-1/4 (159)
	A3 3/8 (9.5)	5 (127)	7-1/2 (191)

Carbide Tipped Scriber

Always a Sharp Point.



A50

Solid carbide tip for scribing fine lines on hardened steel as well as glass, ceramics, plastics or sheet metal. Retractable tip is easily replaceable. Tool has handy pocket clip. Carbide tip assures long service.

CATALOG NUMBER	DESCRIPTION
A50	Carbide Tipped Scriber with retractable point.
A50R	Replacement Carbide Tip.

POCKET SIZE

Sheet Metal Scribe



A40

Five teeth produce 10 scribing depths.

Compact scribe stores in pocket, pouch or tool box.

Use hang hole or magnet to keep handy on-the-job.

Scribe commonplace trim lines on galvanized sheet metal quickly and accurately. Ten pre-set scribing depths from 1/8" to 1" (3 to 25 mm). Each scribing depth size features a dual edged point to create clean, readable and accurate score lines parallel to the edge of the metal sheet. Corrosion resistant finish and etched-in dimensions are readable for life of tool. Packaged in a clear vinyl, reusable pouch for storage in pocket, pouch or tool box.

CATALOG NUMBER	SCRIBING DEPTHS IN. (MM)
A40	1/8", 3/16", 1/4", 5/16", 3/8", 1/2, 5/8", 3/4", 7/8", 1" (3.2, 4.8, 6.4, 9.5, 12.7, 15.9, 19.1, 22.2, 25.4)

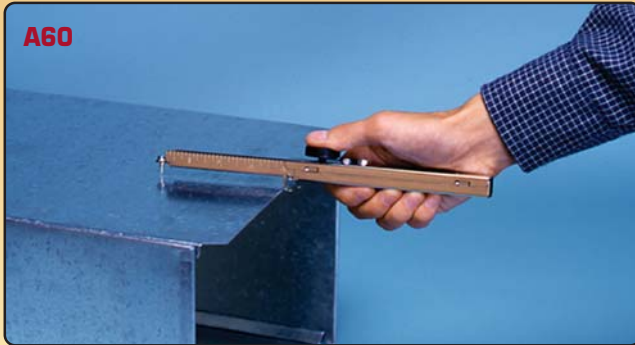


Awls, Scribers & Dividers

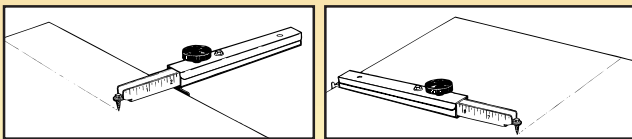


HVAC-
Tools of
the Trade

Adjustable Sheet Metal Scriber



A60



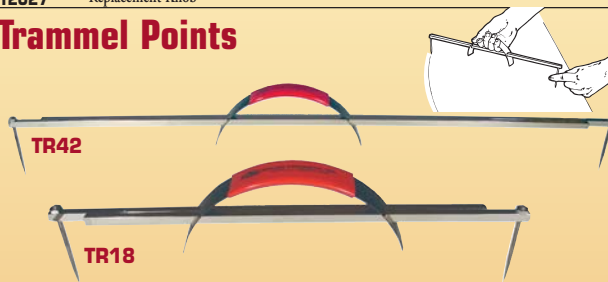
Measure, mark and scribe trim lines on sheet metal in one easy operation. Set desired trim depth on the 1/8" (3.2 mm) graduated scriber extension and tighten knob. The stop at the end of the scriber sleeve glides along edge of work as a 6 x 3/8" sheet metal screw point scribes a clean, hard line. Adjustable from 1/4" to 12-1/2" (6.4 to 318 mm) depths. Rotate the scriber extension and knob end to end for depths larger than 6-1/2" (165 mm). The use of a common sheet metal screw makes point replacement practical and economical. Pocket size tool is constructed of rust resistant nickel plated steel. Knob assembly with hardened steel bolt insert will not strip out.

CATALOG NUMBER	MINIMUM & MAXIMUM ADJUSTMENTS INCHES (MM)	NET WT. oz. (g)
A60	1/4" to 12-1/2" (6.4 to 318)	10 (284)

REPLACEMENT PARTS

12027 Replacement Knob

Trammel Points



Two sizes handle a variety of layout applications. The TR42 expands to a big 42" (107 cm) radius (84" diameter). The compact TR18 expands to 18" (46 cm) and stores in most tool boxes. All steel construction. Points are resharpenable and also replaceable. Telescoping arms are nickel plated to resist corrosion. Handle features a comfortable vinyl grip.

CATALOG NUMBER	RADIUS MIN. IN. (CM)	RADIUS MAX. IN. (CM)	O/A STORAGE LGTH IN. (CM)	NET WT. oz. (g)
TR18	7 (18)	18 (46)	12 (31)	4 (113)
TR42	12 (30)	42 (107)	24 (61)	7 (199)

REPLACEMENT PARTS

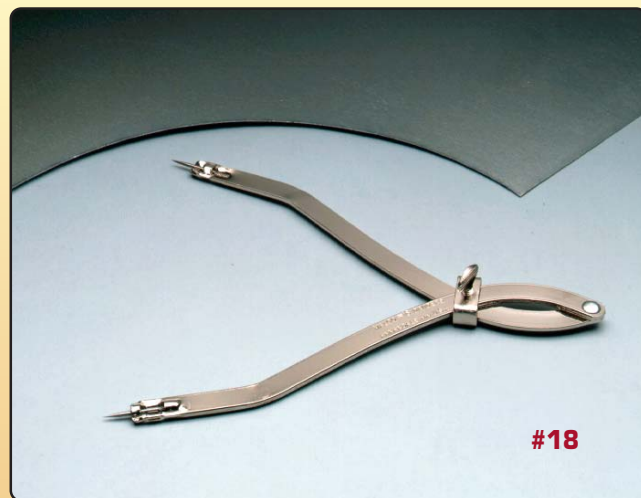
TRP 1 pair replacement points

Dividers



#24

#18



#18

Accurate and fast adjusting. Two sizes for circles up to 32" (81 cm) and 42" (107 cm). Points are easily resharpened or replaced. Nickel plated steel body.

CATALOG NUMBER	DESCRIPTION IN. (CM)	LENGTH IN. (CM)	NET WT. oz. (g)
#18	Maximum diameter circle 32 (81)	11 (28)	7 (199)
#24	Maximum diameter circle 42 (107)	13-1/2 (34)	9 (255)

REPLACEMENT PARTS

RP2 Replacement points for #18 and #24

10018 Thumb Screw